

FACT SHEET

Renaissance Centre

5800 Landerbrook Drive, Mayfield Heights, OH 44124



- Building Size:** 3 story class "A" office building with 27,576 Sq. Ft.
- Available Suites:** 1,500 - 18,000 RSF (includes 10.2% building factor)
- Rental Rate:** \$20.00 / RSF
- Location:** Landerbrook at I-271 Brainard exit.
- Parking:** Underground garage plus ample surface parking.
- Notes:** High image office building in premier east-side office park. Newly renovated lobby. Underground parking garage, above standard finishes, amazing windows. Monument sign for multi-floor user.

For additional information contact:

Jeremy Steiger | Select Ohio, Ltd.

2000 Auburn Drive | Suite 226 | Beachwood, OH 44122
t 216.920.7777 | m 216.559.9090 | f 216.920.4447
js@selectohio.com | www.selectohio.com

Select Ohio
Commercial Real Estate Services

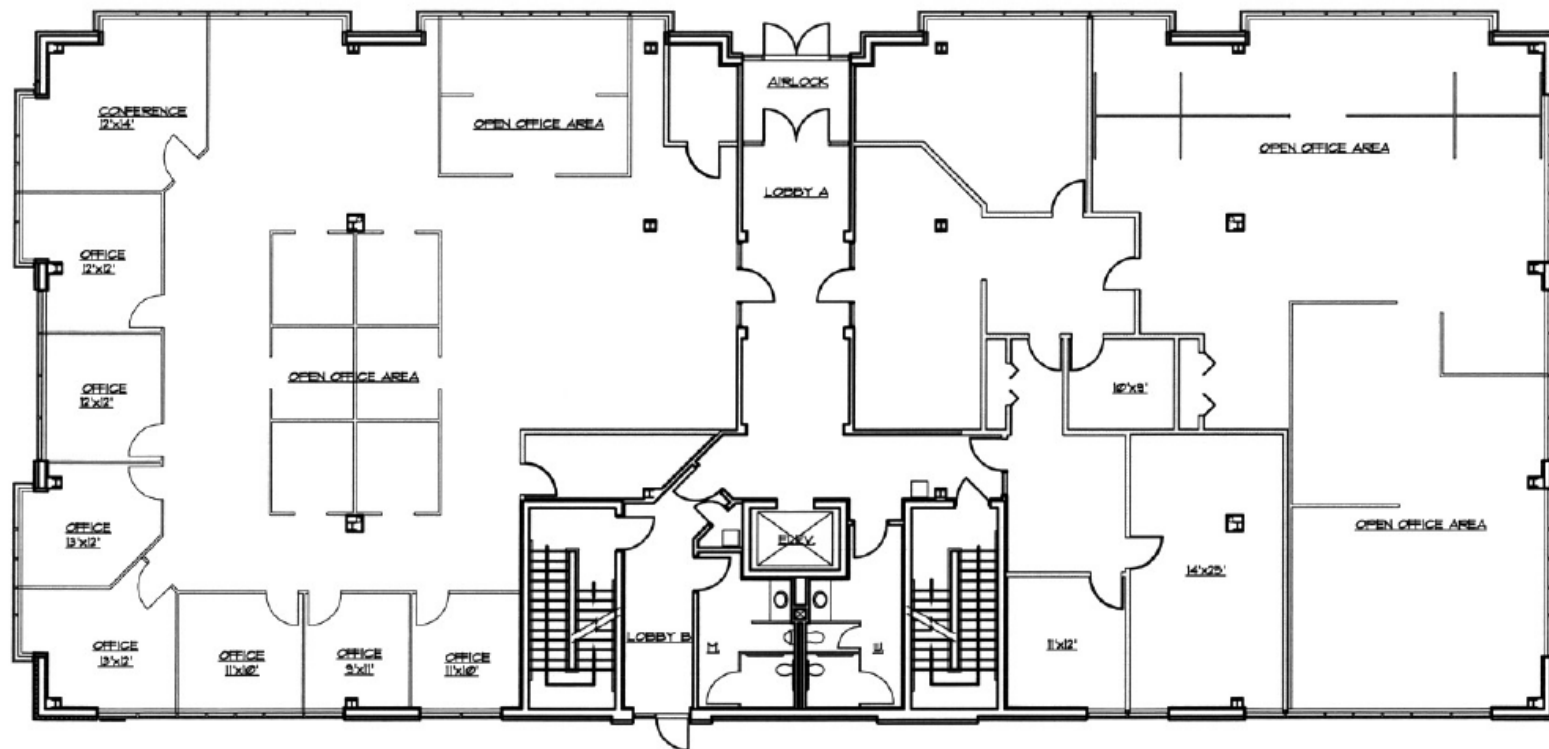
FLOOR PLAN

Renaissance Centre

5800 Landerbrook Drive, Mayfield Heights, OH 44124



First Floor - 8,612 RSF



For additional information contact:

Jeremy Steiger | Select Ohio, Ltd.

2000 Auburn Drive | Suite 226 | Beachwood, OH 44122
t 216.920.7777 | m 216.559.9090 | f 216.920.4447
js@selectohio.com | www.selectohio.com

Selectohio
Commercial Real Estate Services

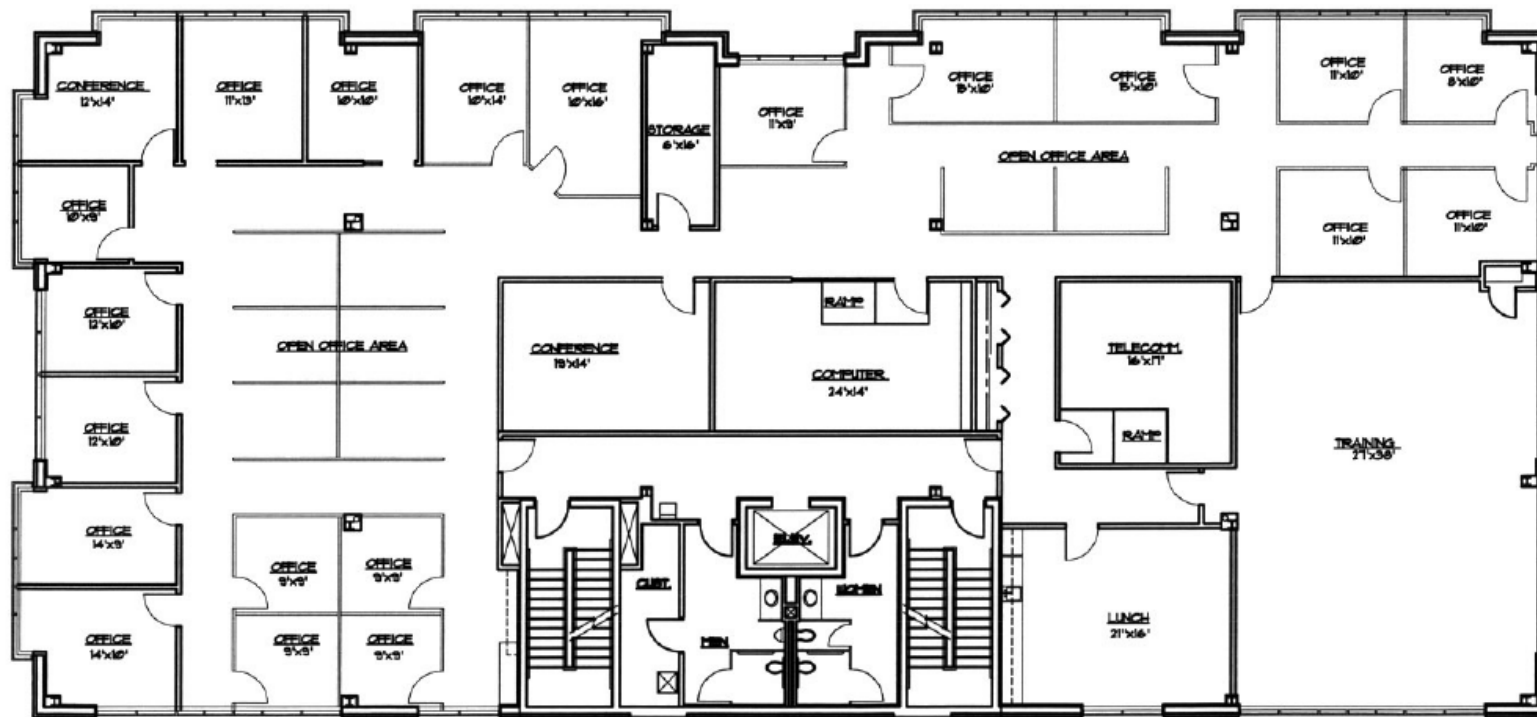
FLOOR PLAN

Renaissance Centre

5800 Landerbrook Drive, Mayfield Heights, OH 44124



Second Floor - 8,901 RSF



For additional information contact:

Jeremy Steiger | Select Ohio, Ltd.

2000 Auburn Drive | Suite 226 | Beachwood, OH 44122
t 216.920.7777 | m 216.559.9090 | f 216.920.4447
js@selectohio.com | www.selectohio.com

Select Ohio
Commercial Real Estate Services

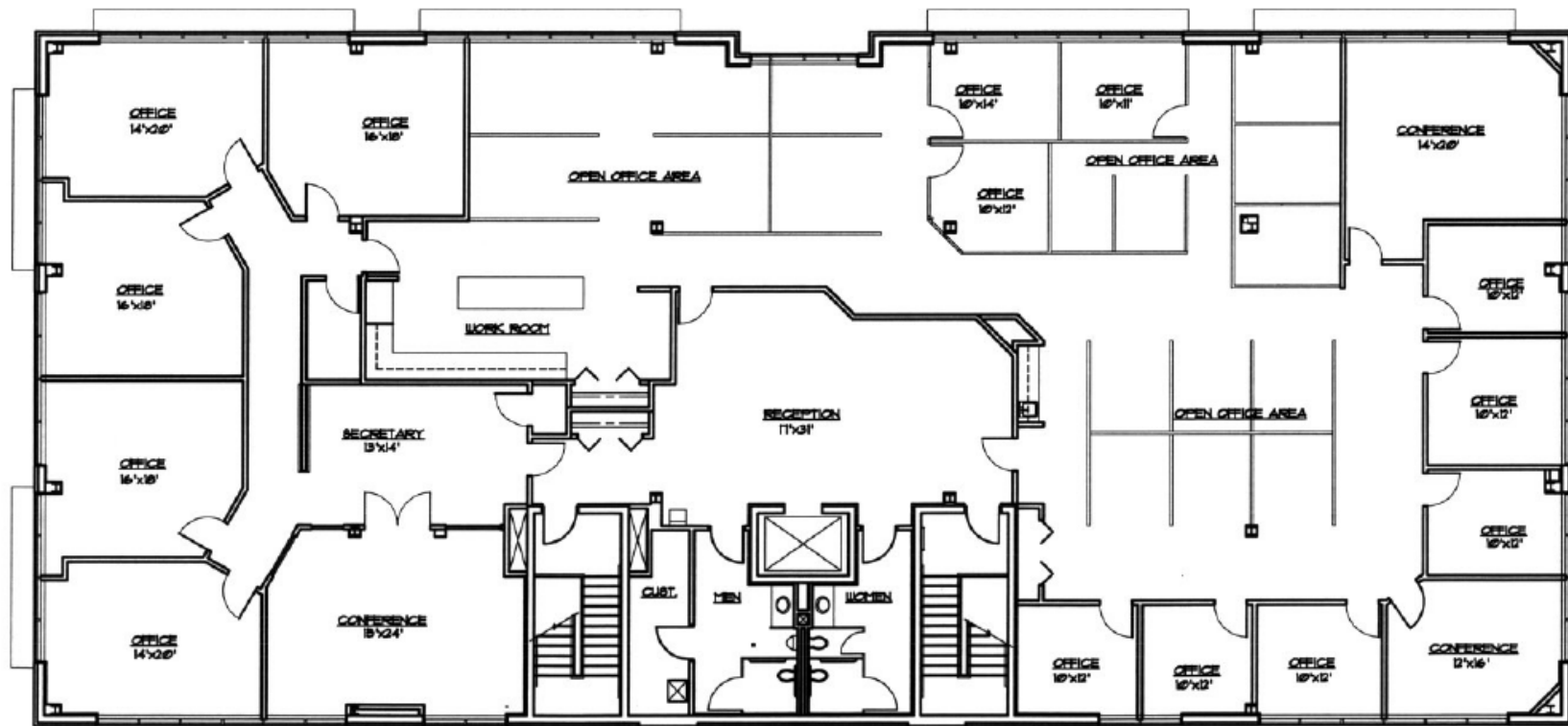
FLOOR PLAN

Renaissance Centre

5800 Landerbrook Drive, Mayfield Heights, OH 44124



Third Floor - 8,674 RSF



For additional information contact:

Jeremy Steiger | Select Ohio, Ltd.

2000 Auburn Drive | Suite 226 | Beachwood, OH 44122
t 216.920.7777 | m 216.559.9090 | f 216.920.4447
js@selectohio.com | www.selectohio.com

Select Ohio
Commercial Real Estate Services

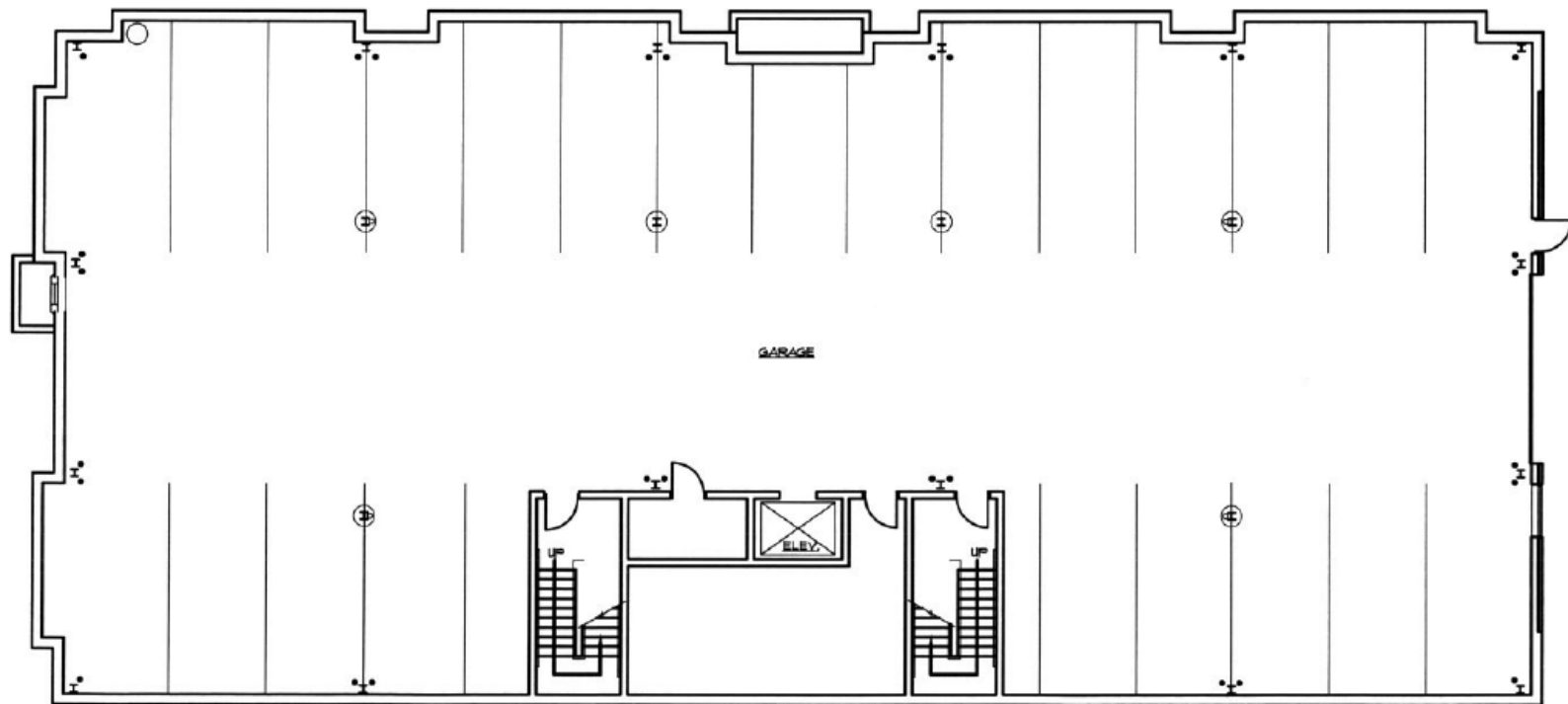
FLOOR PLAN

Renaissance Centre

5800 Landerbrook Drive, Mayfield Heights, OH 44124



Garage Level



For additional information contact:

Jeremy Steiger | Select Ohio, Ltd.

2000 Auburn Drive | Suite 226 | Beachwood, OH 44122
t 216.920.7777 | m 216.559.9090 | f 216.920.4447
js@selectohio.com | www.selectohio.com

Select Ohio
Commercial Real Estate Services